

## Celotex PL3000

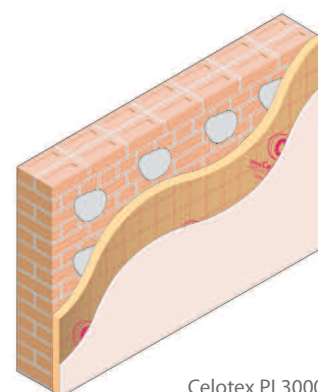
### Introduction

Celotex PL3000 is a high performance thermal insulation board where the PIR insulation is bonded to 12.5mm tapered edge plasterboard.

PL3000 is manufactured from rigid polyisocyanurate (PIR) using a blend of blowing agents that have zero ozone depletion potential (zero ODP) and low global warming potential (GWP).

With Celotex PL3000 you are specifying an insulation board that:

- Offers the user the ability to install both the insulation and plasterboard in one operation thus reducing installation times
- Is suitable for both direct bonding ('dot and dab') and mechanically fixed installation techniques
- Offers the installer maximum flexibility and installation speed due to the tapered edge plasterboard
- Provides reliable long-term energy savings for buildings
- Is suitable for both new build and refurbishment projects
- Can be easily used to upgrade to current building regulation standards
- Can be used in pitched roof, flat roof and wall applications



Celotex PL3000

### Applications

Celotex PL3000 is purpose designed for providing thermal insulation and plasterboard as one product. PL3000 can be specified for use in a variety of applications including:

- The "underneath" layer of insulation in between and under rafter and joist applications
- Solid masonry walls
- Timber frame lining applications

### Specification Clause

The insulation shall be Celotex PL3000 \_\_\_\_\_mm thick comprising a polyisocyanurate rigid foam insulation core bonded to a layer of 12.5mm tapered edge plasterboard. PL3000 is CFC/HCFC free with zero ODP and low GWP. PL3000 is manufactured in accordance with quality management systems BS EN ISO 9001:2000 by Celotex Limited. All products must be installed in accordance with instructions issued by Celotex Limited.

### Celotex PL3000 Technical Data

Product Code	Thickness (mm)	Combined R-value (m <sup>2</sup> K/W)	Weight (kg/m <sup>2</sup> )
PL3025	25 + 12.5	1.15	9.06
PL3040	40 + 12.5	1.80	9.51
PL3055	55 + 12.5	2.45	9.99
PL3065	65 + 12.5	2.90	10.28

Cont...

### Sustainable Insulation

Celotex PIR insulation has been independently assessed by BRE Global and has been accredited with an A+ rating in the 2008 Green Guide.

The results also show that Celotex offers a lower environmental impact than other typical PIR manufacturers.

For further information about Celotex' sustainable insulation solutions, visit the sustainability pages of the website at [celotex.co.uk](http://celotex.co.uk)



## Physical Properties (insulation only)

	Method	PL3000
<b>Compressive strength</b>	BS EN 826	≥120kPa
<b>Dimensional stability</b>	BS EN 1604	DS(TH)8
<b>Thermal conductivity</b>	BS EN 12667	0.023 W/mK
<b>Reaction to fire</b>	BS EN 13501	Euroclass F

Please note: The plasterboard used in PL3000 is defined as Class O in accordance with the Building Regulations. For further product data on the plasterboard used in PL3000, please contact the Celotex Technical Centre.

## Typical U-values

U-values will vary depending on application. To calculate a specific U-value, please contact the Celotex Technical Centre on 0901 996 0100\*

## Installation Guidelines

Installation of Celotex PL3000 will depend on application type. For full details on the installation of Celotex PL3000, please refer to the 'application' pages of the website at [celotex.co.uk](http://celotex.co.uk) and select the application of interest.

## Further Information

If you wish to contact Celotex, please visit [celotex.co.uk](http://celotex.co.uk) and click on the 'contact us' page.

Care and preventative measures should be taken when lifting and installing Celotex PL3000 due to the weight of the plasterboard. For Health & Safety advice or information regarding storage and handling of Celotex products, please refer to the 'literature' pages of the website at [celotex.co.uk](http://celotex.co.uk)

Celotex has a policy of continuous product development and reserves the right to alter product designs or specifications without prior notice.

\*Calls to the Celotex Technical Centre are charged at 30p per minute from a BT landline and lines are open Monday - Friday from 8.00am - 5.15pm. Details and pricing are correct at date of publication - January 2009.

**Celotex Limited**  
Lady Lane Industrial Estate,  
Hadleigh, Ipswich  
Suffolk IP7 6BA

**T:** 0901 996 0100\*  
**W:** [celotex.co.uk](http://celotex.co.uk)

Registered Office:  
Lady Lane Industrial Estate  
Hadleigh, Ipswich, Suffolk IP7 6BA  
Registered in England No 2183896